



GLOBAL **VALVE** TECHNOLOGY

Volumetric Rotary Piston Water Meter



◆ **LXH-32B(DN32)**
[Flanged ends]

Application

- ◇ Measuring the volume of cold potable water passing through the pipeline.

Features

- ◇ Ensures high sensitivity and accurate registration throughout a wide flow range.
- ◇ Mechanical transmission movement equates to maximum reliability.
- ◇ Corrosion resistant body.
- ◇ Liquid-sealed register.
- ◇ Easy reading and long term clear reading.
- ◇ Low starting flow rate.
- ◇ Internal non return valve.
- ◇ Internal strainer.
- ◇ Can be equipped with reed switch option.

Indication

- ◇ Cubic meter(m³) and U. S. gallon (USG) for selecting.

Compliance with Standard

- ◇ Technical data conforms to ISO 4064 Class C Standard.

Working Conditions

- ◇ Water temperature: ≤40°.
- ◇ Water pressure: ≤1.6MPa.



Main Technical Data

Nominal diameter	DN	32	
Maximum flow rate	m ³ /h	Qmax	12
Nominal flow rate	m ³ /h	Qn	6.0
Transition flow rate	l/h	Qt	90
Minimum flow rate	l/h	Qmin	60
Maximum reading	m ³		9999.9999
Minimum reading	m ³		0.0001
Minimum graduation	L		0.02

Maximum Permissible Error:

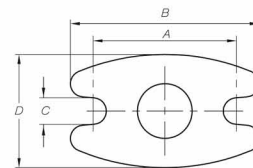
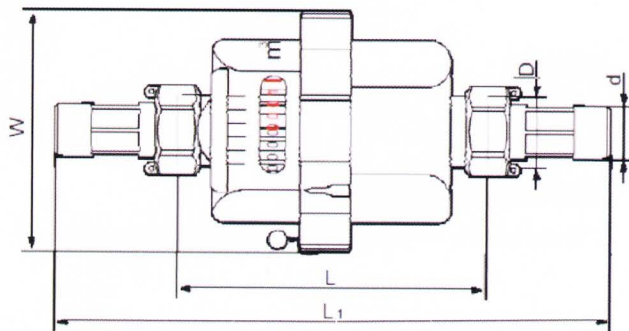
- ◇ In the lower zone from Qmin inclusive up to but excluding Qt is ±5%.
- ◇ In the upper zone from Qt inclusive up to and including Qmax is ±2%.

Dimensions and Weights

Nominal diameter	DN	32	
Body thread	D	G1 ¹ / ₂ B	
Connector thread	d	R1 ¹ / ₄	
Body length	mm	L	260
Overall length	mm	L ₁	384
Width	mm	W	142
Weight without connectors	Kg		4.2
Weight with connectors	Kg		4.99

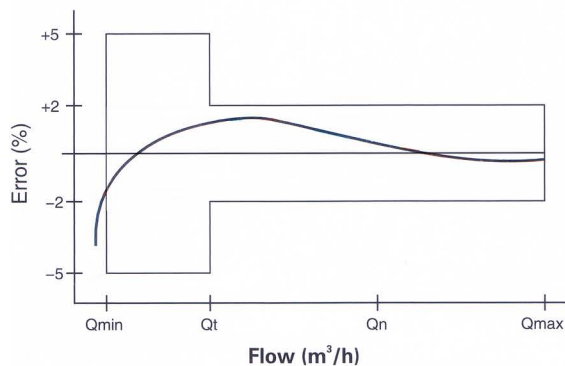
◇ "L₁" is the total length when coupling gaskets without compression.

Dimension Picture



Nominal diameter DN	Dimensions, mm			
	A	B	C	D
32	84 ± 1.5	110 ± 3.0	14 ± 1.5	65 ± 3.0

Accuracy Curve



- ◇ Nominal diameter and arrow are indicated on the side of the body, which we can see from dimensions picture.
 - ◇ Maximum flow rate and arrow are indicated on the other side.
- For example:

Head Loss Curve

